

### 4.11.1 Adults (18 to 64 years) with learning disabilities

#### Outline.

Learning disability is a life long condition which is usually diagnosed in early childhood, in most cases this means that the person will have been identified and known to health services from a young age. Through life transitions between Children's and Adult Services, the need for support and the type of support will change as a young person moves through education and young people's services and into adulthood.

Prevalence of learning disability can be considered from two perspectives; people who have a diagnosis of a learning disability and the people known to services; these populations can differ. Emerson & Hatton (2004) for the Department of Health have developed estimates of prevalence – these are defined as '*administrative*' prevalence and '*true*' prevalence.

- *Administrative* prevalence within their model is based on data held on a number of local disability registers combined with data on people with learning disabilities who are known to learning disability services.
- *True* prevalence reflects the reality that only a proportion of people with less severe learning disabilities are known to local learning disability services. The estimates of true prevalence within their model are based on a range of different epidemiological data.

Broadly speaking, '*administrative*' rates are likely to include people with severe and moderate to severe learning disabilities: i.e. it will largely comprise of those who may be service users or people who would qualify for our support, whereas '*true*' estimates will include severe to mild levels of learning disability. In practice, the group with whom we are more likely to be focussed will be those in the '*administrative*' category.

#### Data Description

There is no reliable locally collected data on the numbers of people with learning disabilities available in Northamptonshire. Estimated prevalence rates are provided by the PANSI system. The PANSI system provides population estimates for adults with learning disabilities for the 18-64 population using prediction rates for 2011 and 2021, which are adjusted to take into account ethnicity and mortality, and linear trends are then applied to the ONS population forecasts. In order to produce the Northamptonshire district forecasts the locally calculated Northamptonshire Population Model has been applied to the prediction rates.

#### Key Issues

- In 2008 Northamptonshire was estimated to have had an estimated 10,500 people aged 18-64 with a learning disability, which is the highest number across its statistical neighbours. This population is estimated to increase by 7.1% (750) by 2015 to almost 11,300. The majority of this increase will be in the 25-34 (423) and the 45-54 (443) age groups, with the 35-44 age group experiencing a reduction of 5.3% (-143).
- Between 2008 and 2015 all Northamptonshire districts are estimated to experience increases in the number of adults with learning disabilities, with Corby recording the largest relative increase of 23.4% (209). However, all districts are predicted to experience notable absolute increases of between 181 and 210 with Northampton recording the greatest increase.

#### Consequences

The total number of people with a learning disability will increase year on year. The change in societal attitudes towards people with a learning disability and the development of the inclusion agenda, increased acceptance of rights and choices for learning disabled people, will require all

---

## Chapter 4: Health and Social Care Need

services to ensure that they are able to meet the needs of people with a learning disability in the community. In addition there will be a need to increase and diversify the availability and accessibility of services to meet the specialist needs of learning disabled people. This will require a range of service types, for example, community support, accommodation based support, housing, education and employment.

### Key Documents

Emerson, E. and C. Hatton. 2004. *Institute for Health Research: Estimating future need/demand for supports for adults with learning disabilities in England*. Lancaster: Institute for Health Research.

Foundation for people with learning disabilities. 2009. *Learning disabilities website* (Online). Available from: <http://www.learningdisabilities.org.uk/information/learning-disabilities-introduction/>.

	15-19	20-24	25-29	30-34	35-39	40-44	45-49	50-54	55-59	60-64
<b>2011</b>	2.77%	2.69%	2.49%	2.49%	2.45%	2.45%	2.28%	2.37%	2.33%	2.20%
<b>2021</b>	2.67%	2.71%	2.49%	2.49%	2.46%	2.47%	2.31%	2.39%	2.32%	2.22%

Table 4.11.1.1 Learning Disability Prevalence Estimates, Source: PANSI

2008	2010	2015	2020	2025
10,536	10,819	11,286	11,779	12,249

Table 4.11.1.2 People aged 18-64 predicted to have a learning disability, Northamptonshire, Source: PANSI

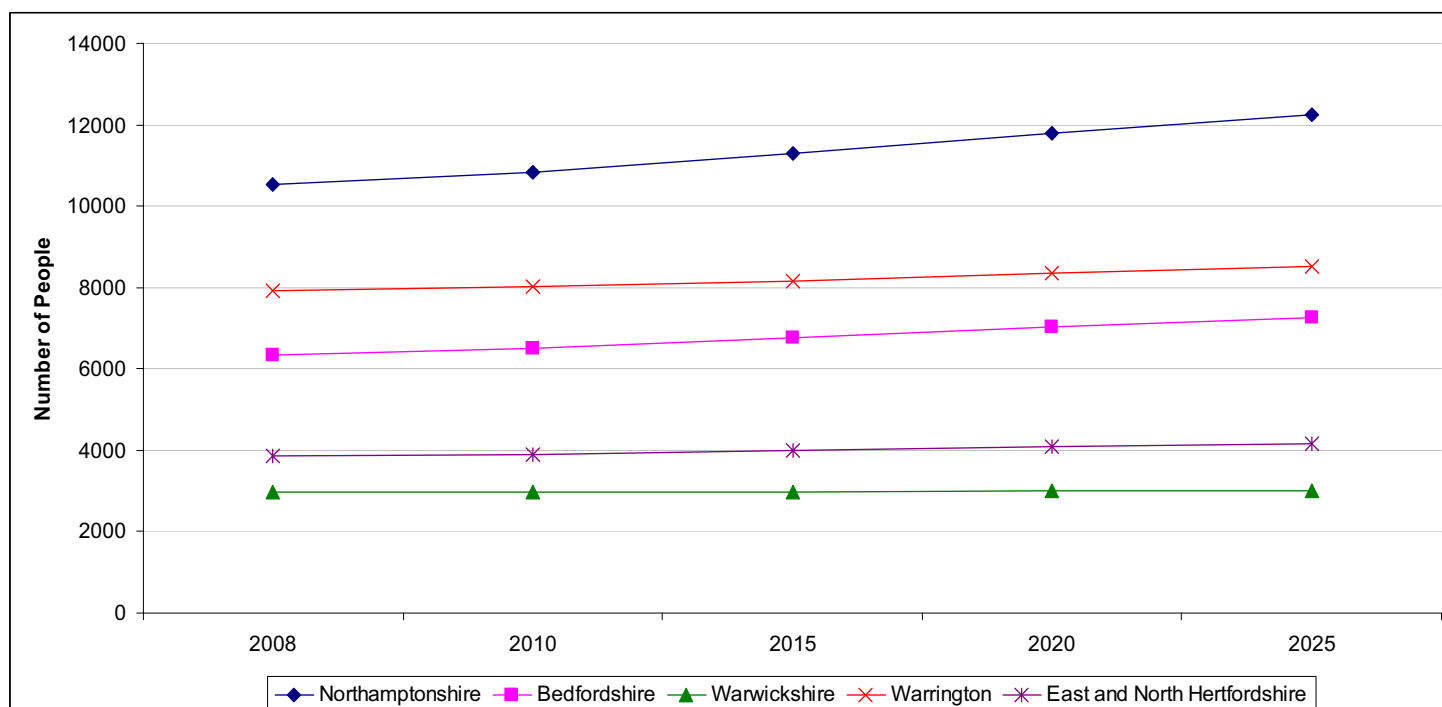


Figure 4.11.1.1 Total Population aged 18-64 predicted to have a learning disability – Northamptonshire and Most Similar PCTs – 2008 to 2025, Source: PANSI

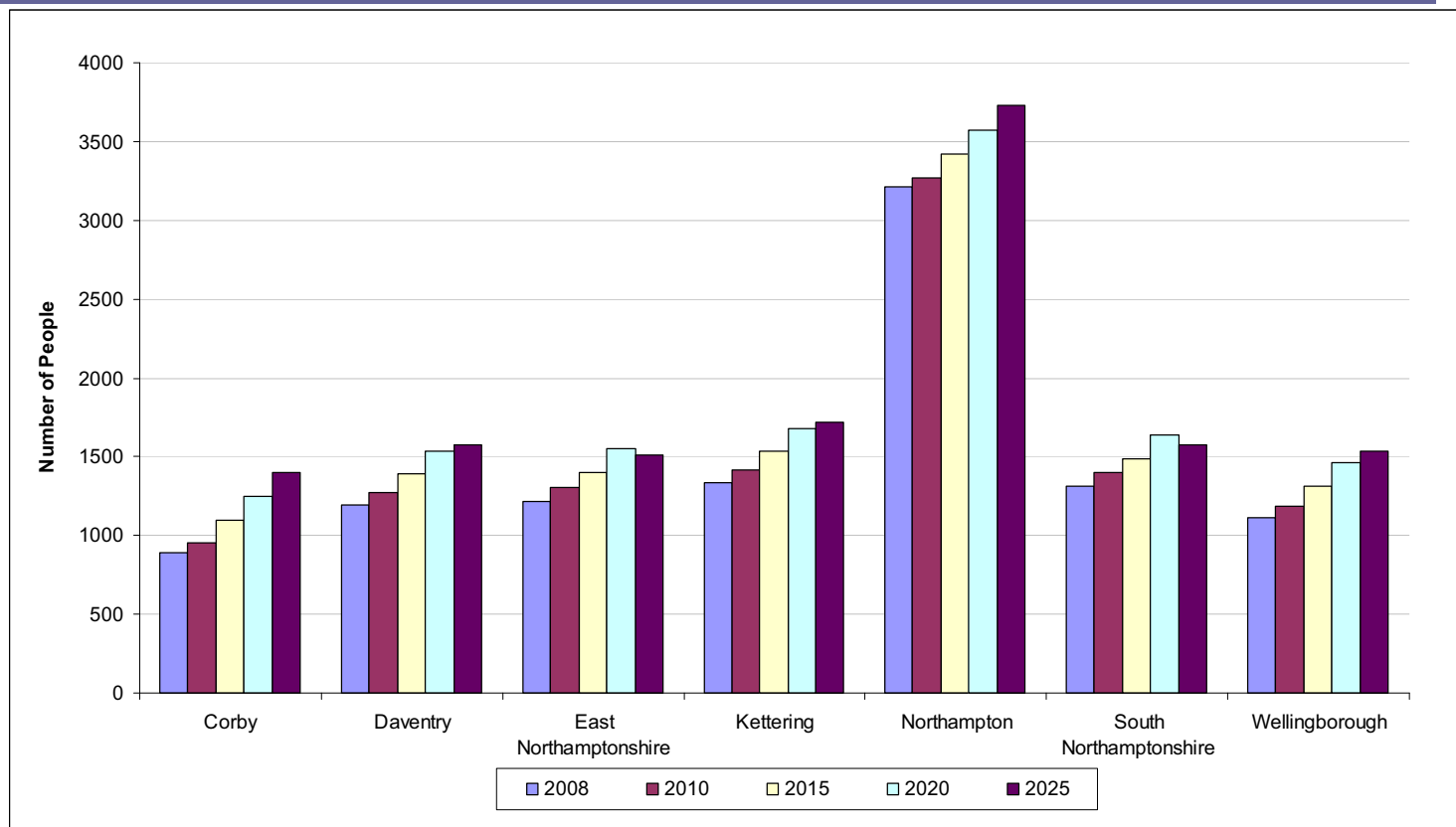


Figure 4.11.1.2 Total Population aged 18 to 64 predicted to have a learning disability – Northamptonshire Districts - 2008 to 2025, Source: PANSI

### 4.11.1.1 Adults (18 to 64 years) with moderate or severe learning disabilities

#### Outline

This section investigates the prevalence of moderate or severe learning disabilities in the 18-64 population in Northamptonshire. People who fall within this group are most likely to be known to service providers and it is likely that they will require support to undertake daily living tasks and may have additional health needs which may require specialist services. This will include people who are described as having high individual support needs. They may have a profound learning disability, behaviour that is sometimes challenging, additional sight or hearing difficulties, autism, mental illness or many additional health problems.

#### Data Description

There is no reliable locally collected data on the numbers of people with learning disabilities available in Northamptonshire. Estimated prevalence rates are provided by the PANSI system. The PANSI system provides population estimates for adults with moderate or severe learning disabilities for the 18-64 population using prediction rates for 2011 and 2021, which are adjusted to take into account ethnicity and mortality, and linear trends are then applied to the ONS population forecasts. In order to produce the Northamptonshire district forecasts the locally calculated Northamptonshire Population Model has been applied to the prediction rates.

#### Key Issues

- In 2008 Northamptonshire was estimated to have had approximately 2,400 people aged 18-64 with a moderate or severe learning disability, which is the highest number across its statistical neighbours. This population is estimated to increase by 7.0% (168) by 2015 to almost 2,600. The majority of this increase will be in the 25-34 (91) and 45-54 (100) age groups, with these groups both increasing by around 20% while the 35-44 age group will experience a reduction of 5.2% (-35).
- All Northamptonshire districts are estimated to experience increases in this area between 2008 and 2015 with Corby predicted to record the greatest proportional growth at 23.4% (48), while all districts will record similar absolute increases of between 41 and 48 people.

#### Consequences

This group of people have a high need for services and are the greatest in number and therefore will require significant attention to ensure that services are available and appropriate, services are suitable to meet the personalisation agenda, allow for individual choice and control, and that mainstream health services are available and equipped to meet the needs of learning disabled people.

#### Key Documents

Foundation for people with learning disabilities. 2009. *Learning disabilities website* (Online). Available from: <http://www.learningdisabilities.org.uk/information/learning-disabilities-introduction/>.

Emerson, E. 2008. *Centre for Disability Research Report 2008:6 Estimating future need for adult social care services for people with learning disabilities in England*. Lancaster: Centre for Disability Research (CeDR).

Emerson, E. 2009. *Centre for Disability Research Report 2009:1 Estimating the future numbers of adults with profound multiple learning disabilities in England*. Lancaster: Centre for Disability Research (CeDR).

Emerson, E. and C. Hatton. 2004. *Institute for Health Research: Estimating future need/demand for supports for adults with learning disabilities in England*. Lancaster: Institute for Health Research.

---

## Chapter 4: Health and Social Care Need

Institute of Public Care. 2009. *Working Paper 1: Estimating the prevalence of severe learning disability in adults*. Oxford: Oxford Brookes University.

	15-19	20-24	25-29	30-34	35-39	40-44	45-49	50-54	55-59	60-64
<b>2011</b>	0.68%	0.6%	0.53%	0.54%	0.61%	0.62%	0.56%	0.48%	0.55%	0.43%
<b>2021</b>	0.68%	0.61%	0.53%	0.54%	0.61%	0.63%	0.57%	0.49%	0.55%	0.43%

Table 4.11.1.3 Moderate or Severe Learning Disability Prevalence Estimates, Source: PANSI

2008	2010	2015	2020	2025
2,407	2,470	2,575	2,689	2,809

Table 4.11.1.4 People aged 18-64 predicted to have a moderate or severe learning disability, Northamptonshire, Source: PANSI

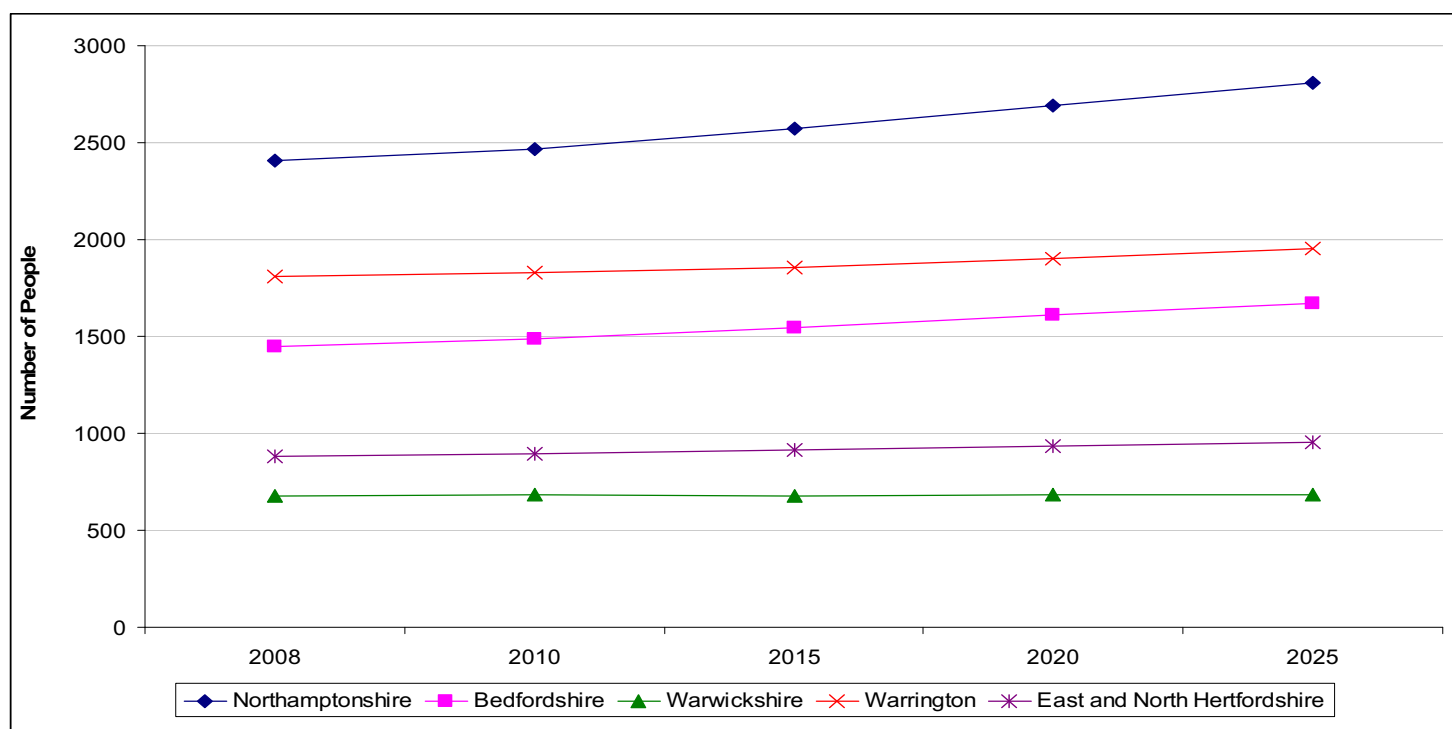


Figure 4.11.1.3 Total Population aged 18-64 predicted to have a moderate or severe learning disability – Northamptonshire and Most Similar PCTs – 2008 to 2025, Source: PANSI

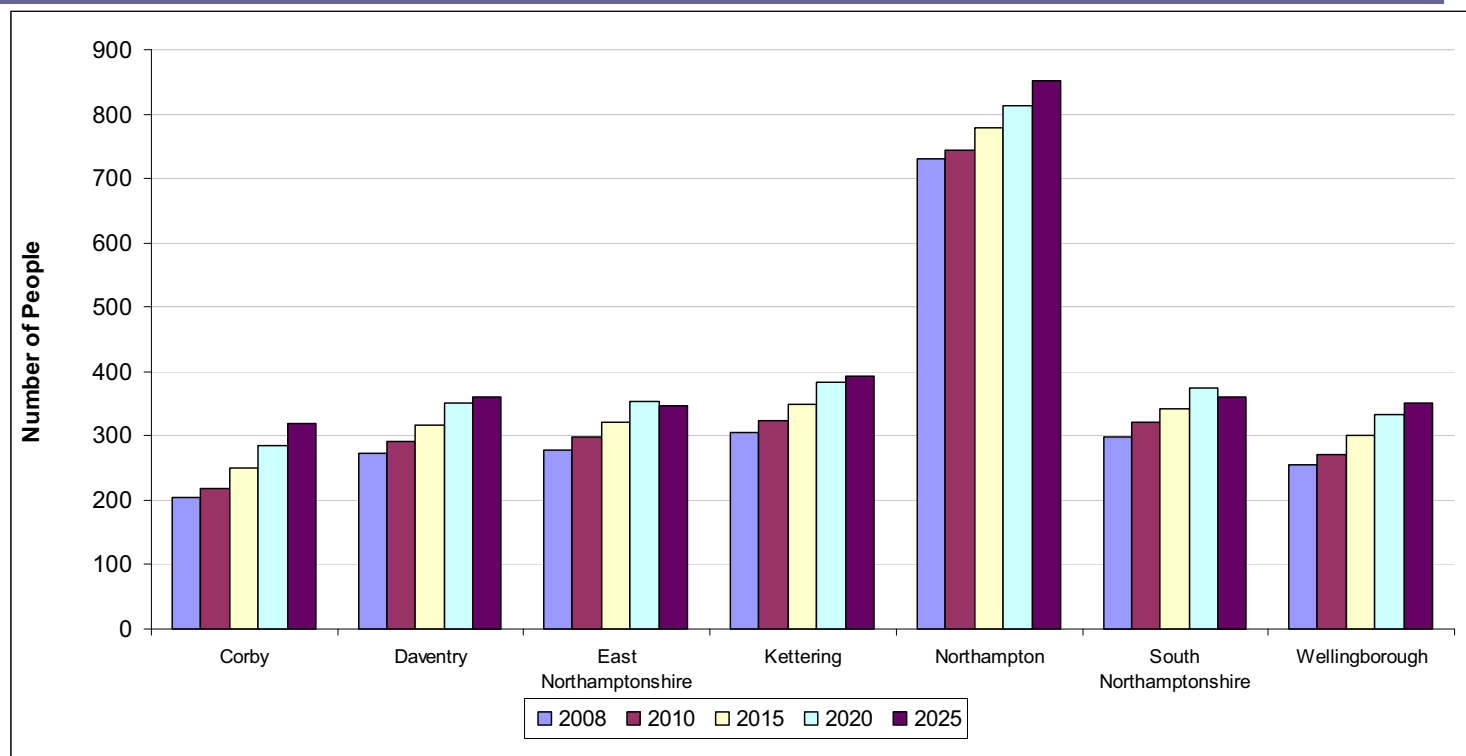


Figure 4.11.1.4 Total Population aged 18 to 64 predicted to have a moderate or severe learning disability – Northamptonshire Districts - 2008 to 2025, Source: PANSI